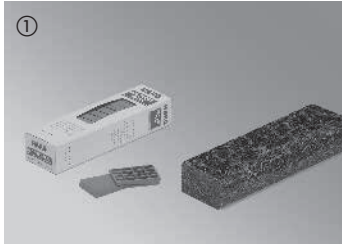


Laying instructions for floating installation of Celenio with Top Connect

CELENIO
by **HARO**

Attention: Read thoroughly from beginning to end before installation!

Please always comply with the installation instructions that are enclosed with the cartons. The accompanying instructions are binding!



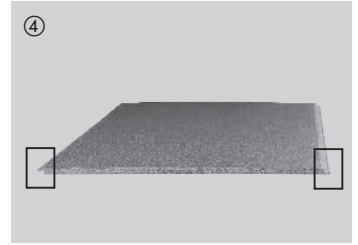
Installation tools: Tapping block, distance spacers, pencil, saw.



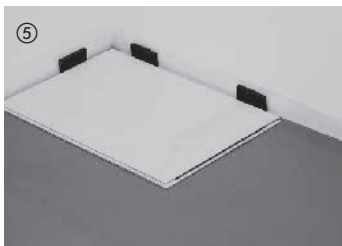
Always use 0.2 mm thick PE film overlapped by 30 cm as an underlay when laying your floor over floor screed. This should overlap in the 30 cm impact area. Extend underlay up all walls. After having installed the skirtings cut underlay at the upper edge of the skirtings.



For sound insulation and to smooth out slight irregularities of the subfloor, unroll 2 mm thick luxury insulation layer. Our range of accessories also offers suitable insulation underlays. Asphalt-bitumen felt is not suitable for sound insulation. **Do not use any additional insulation underlay when laying Celenio Silent Pro®.**



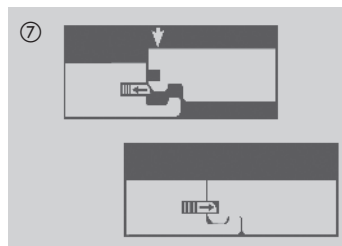
Long side moulding
Tongue side / Groove side



Starting in the left-hand corner of the room, align the boards of the first row with the tongue side parallel to the wall, and fix them in place with wall spacers or plastic spacers as you proceed (always keep an expansion gap of 10–15 mm (3/8 " - 1/2 ") around perimeter).



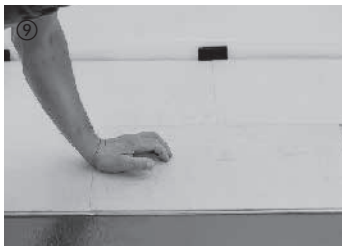
The remaining boards of the first row must be clicked in from above at the head ends into the previous boards. Pressure applied briefly to the side joint clicks in the board into the adjacent board. It is important to ensure that the first row is straight and exactly parallel to the wall. Cut the last board of the first row to size, leaving an expansion gap of 1015 mm (3/8 " - 1/2 ") between the board and wall. Fit in the board and lay it flat.



Short side profile
Interlocking



The next row is started with the leftover piece of the first row (short side offset of at least 18 cm). This considerably reduces waste. The rest of the installation is performed board-by-board. First, the boards are angled into the previous row along the long side by applying a small amount of force.



The board is then lowered in on the short side. Ensure here that the board is flush at the short side with the previously laid board. Pressure applied briefly to the side joint clicks in the board.



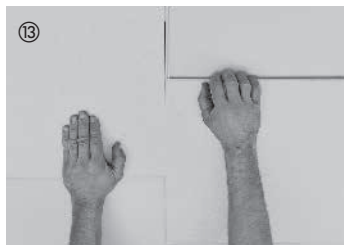
Cut to size and fit in the boards of the last row. Leave a gap of 10 to 15 mm between the boards and wall.



Be sure to remove all distance spacers once all boards are laid. Fasten skirtings (with or without clip system) to the walls – that's it.
Note: If radiator pipes protrude from the floor, drill or saw a cutout into the board, leaving the required expansion space.



In doorways, mount a suitable moulding system to ensure the necessary expansion space. This also applies if the same floor is to be laid in the adjoining room. Leave an expansion gap of at least 5 mm (approx. 1/4 ") between the board and the base of the moulding. As a rule, a fine saw must be used to cut a gap the thickness of a board in wooden door frames to allow Celenio to expand.



Unlocking of Top Connect:
The boards can be pushed out from
one another parallel.

General information

Attention: Read thoroughly from beginning to end before installation!

Measures to take before installation

Do not open the cartons prior to installation. Store and climatise the unopened cartons inside. New constructions to be closed in with air conditioning or heating units during the winter months. Recommended room conditions for installation are 18 °C (65 °F).

Important: Prior to installation, inspect each Celenio tile in daylight for any visible faults, damage and also check colour, structure and form deviations. No claims are accepted once flooring boards have been installed.

When installing, mix Celenio boards from different cartons to compensate for material-related colour variations.

After installation, Celenio floating parquet will adjust to the prevailing climatic conditions. Depending on the air humidity, Celenio may experience a first reaction (slight variation of the layer). It will return to normal within a week.

Elastic and textile floor coverings must be completely removed leaving no remains.

Celenio colours vary according to the influence of UV light (daylight).

Celenio Top Connect is not approved for commercial/public applications and for installation in bathrooms.

Talks should be carried out in advance with the technical department regarding the installation especially in case of permanent partial load due to heavy furniture (e.g. heavy kitchenette equipment).

For glue-down installation of Celenio TC, ask our department for application techniques for the corresponding laying instructions. The instructions are binding.

Direction of installation:

With floating installation in large areas over 10 m (33 ft.) in length or width, an expansion joint must be allowed for. Apply an expansion moulding or cover strip over said expansion joint.

- Ensure that the boards are always laid lengthways in narrow hallways.
- When installing T, L or U-shaped areas, separate the flooring areas according to the room layout by using a suitable profile system. Use suitable moulding systems for connections or transitions to fixed components (not with silicone).

Subfloor:

The subfloor must be tested before laying according to the German standards VOB, Part C, DIN 18 365 "Flooring Works" and DIN 18 356 "Parquet Works." The subfloor must be dry, absorbent, clean and even, compression- and tension-proof, and free of cracks.

Moisture check:

The subfloor must be checked for moisture by using e.g. a CM measuring instrument.

Cement screed max. 2.0 % CM, with underfloor heating 1.8 % CM; anhydride screed max. 0.5 % CM, with underfloor heating 0.3 % CM. When laying parquet flooring over newly installed concrete screed or cast plaster subfloors – after a curing time of at least 6 to 8 weeks – or over underfloor heating, always use 0.2 mm (8 mils) PE film as an underlayment for additional moisture protection. Overlap seams with 30 cm (12 ") and tape. When laying your floor in rooms on or below grade, it is necessary that a state-of-the-art or DIN-compliant moisture barrier be installed.

The floor manufacturer's instructions are of crucial importance when testing for moisture, in particular on mineral subfloors.

Please observe the preparatory measures which you find on our web site and in the "Installation over Underfloor Heating" section of these Laying Instructions. Prior to installation, a signed Record of Preparatory Subfloor Heat-Up Phase must be submitted by the client.

Installation over underfloor heating:

When installing your floor over underfloor heating, the screed must be laid in accordance with the German DIN 1853 standard. Before you start the installation, please verify that the underfloor heating system has been installed in compliance with DIN EN 1264 Part 1-4 and that the proper preparatory heat-up phase has been completed once the professional installers have been coordinated. Detailed information and instructions are available from your local authorised dealer.

Care:

Dry cleaning: It is usually absolutely sufficient to clean Celenio dry using a dust mop, soft broom or vacuum cleaner.

Damp cleaning: We recommend damp mopping your floor surface with clean & green natural diluted in water. Cleaning frequency depends here on the wear and tear your floor is subjected to.

Please note: Do not use soap-based detergents, abrasive cleaners, scouring powder, steel wool, wax or polish for cleaning and maintenance. Always avoid letting water stand on the surface.

Warning note: Steam cleaning machines are not suitable for cleaning Celenio.

Climatic conditions:

What is good for people is also good for the high-grade woods of your Celenio floor. A room temperature of 20° C (68 °F), a relative humidity of about 30–60 % is required. In order to keep the air humidity constant, especially during hot periods, we recommend you use a humidifier. This will prevent any extreme drying out of the floor. Air humidifiers should be switched on right from the beginning of the heating season. If air humidity falls below predefined values, small gaps may appear.

Additional preventive protection:

To preserve the quality and beauty of your floor we recommend using Teflon furniture glides (PTFE) under chairs and furniture legs and doormats in entrances. Chair castors and office roller chairs must comply with German Standard DIN 12529. Use only lined rollers of type W (soft). It is also a good idea to use polycarbonate mats as underlay for armchairs and office chairs.

Disposal and the environment:

Look for low-emission products when using glues. The best approach to removing flooring is to proceed in the reverse order of its installation. Disposal is carried out in compliance with national and local laws and regulations.

07/17 Subject to modification in the interest of technical development.